

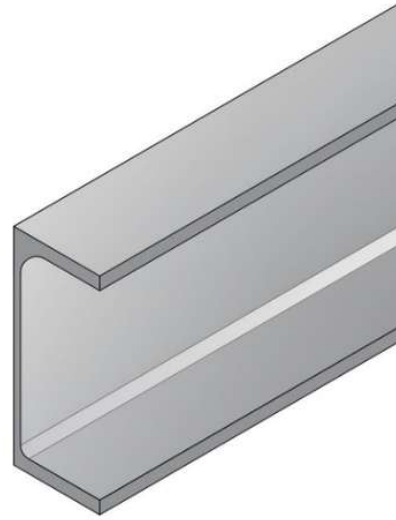
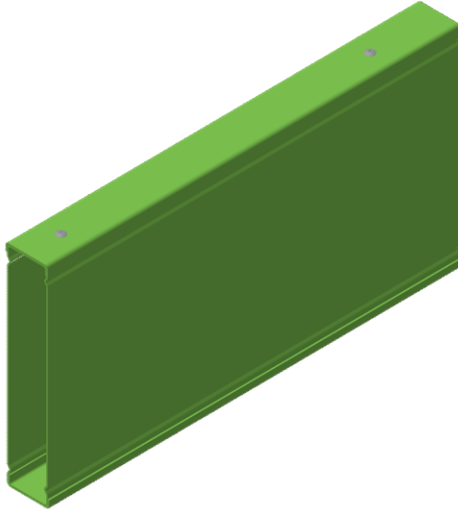


Structural Steel Alternative

ULTRASPAN™ Box Beam

Engineered Beam Equivalent System

Restrained Ultraspan Box Beam equivalent to Restrained PFC Beams Under UDL Loadings



Box Profile	PFC BEAM SIZE					
	150PFC	180PFC	200PFC	250PFC	300PFC	380PFC
b200.24	Indicates - Certain	Indicates - Possible	Indicates - Unlikely	Indicates - Unlikely	Indicates - Unlikely	Indicates - Unlikely
b250.24	Indicates - Certain	Indicates - Highly possible	Indicates - Unlikely	Indicates - Unlikely	Indicates - Unlikely	Indicates - Unlikely
b300.24	Indicates - Certain	Indicates - Highly possible	Indicates - Certain	Indicates - Possible	Indicates - Unlikely	Indicates - Unlikely
b360.24	Indicates - Certain	Indicates - Highly possible	Indicates - Certain	Indicates - Possible	Indicates - Possible	Indicates - Unlikely
2/b200.24	Indicates - Certain	Indicates - Highly possible	Indicates - Certain	Indicates - Possible	Indicates - Possible	Indicates - Unlikely
2/b250.24	Indicates - Certain	Indicates - Highly possible	Indicates - Certain	Indicates - Possible	Indicates - Possible	Indicates - Unlikely
2/b300.24	Indicates - Certain	Indicates - Highly possible	Indicates - Certain	Indicates - Certain	Indicates - Possible	Indicates - Possible
2/b360.24	Indicates - Certain	Indicates - Highly possible	Indicates - Certain	Indicates - Certain	Indicates - Certain	Indicates - Possible

Colour Codes

	Indicates - Certain
	Indicates - Highly possible
	Indicates - Possible
	Indicates - Unlikely

Notes

1. Only uniformly distributed loads have been considered.
2. Only beams fully restrained against lateral buckling and lateral-torsional buckling at maximum 600 mm centres have been considered.
3. Beam support connections and bearing capacities are not included in this assessment and must be verified separately for each project based on the specific connection type.
4. This information is provided as general guidance only. It does not constitute final certification. Each project must be individually assessed and certified by a registered structural engineer.